



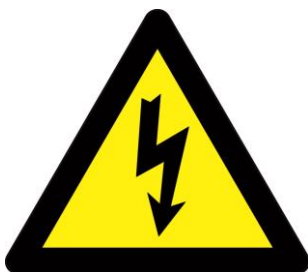
Den Braven



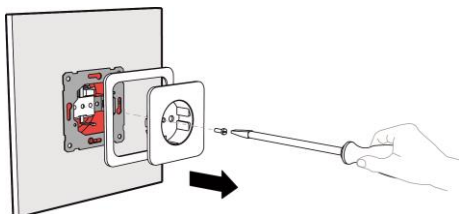
APPLICATION GUIDELINES

Zwaluw FireProtect FP Wall Outlet

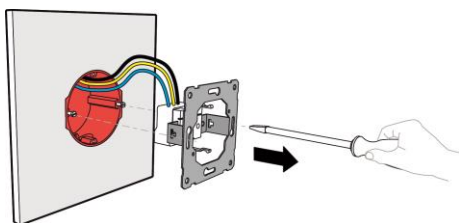
The FP Wall Outlet is easy to fit in a wall socket.



1. Ensure that the wall socket is mounted correctly and in a fire-resistant structure. Check that the wiring is disconnected from the main power supply.



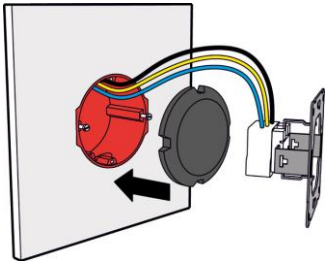
2. Remove the cover of the wall socket or the switching equipment.



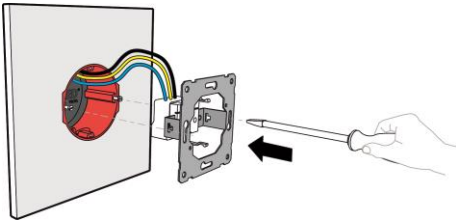
3. Remove any mechanism from the wall socket. Remove all wiring and items such as wire connectors.



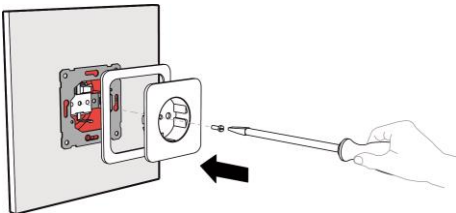
Den Braven



4. Insert the FP Wall Outlet against the back of the wall socket.



5. Reinstall the wiring.



6. Replace the cover.